

# Guide for Assembling a Pressure Vessel

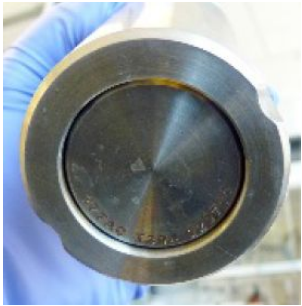
## Overview

This guide serves as an example and is presented with permission from LBNL. There are many types of pressure vessels so this serves as a template that allows you to replace the images to meet your specific needs.

Visual comparison guides are effective as a quick review of processes. It is recommended to keep these near relevant equipment. Visual guides can be useful for new researchers learning to use the equipment or as a refresher for those who do not regularly use the equipment. People may interpret qualitative descriptions differently so a visual guide helps to solve that variability.

## Guide for Assembling a Pressure Vessel

**STEP 1:**  
 Insert bottom



Insert bottom disc so that part numbers are visible on the outside

**STEP 2:**  
 Insert cup



Insert pre-loaded cup. push bottom disc up to meet the cup then slide both to bottom.

**STEP 3:**  
 Fit Teflon lid



Place Teflon lid on top

**STEP 4:**  
 Place both disks



Add corrosion disc. Then add rupture disk.

**STEP 5: Bottom**  
 Pressure plate & spring



Place the bottom pressure plate on top of the rupture disc, so that the part number is facing up. Set the spring in the depression.

**STEP 6:**  
 Top pressure plate



Add the upper pressure plate so that part number is facing up

**STEP 7:**  
 Fit screw cap



Place screw cap on top.

**STEP 8:**  
 Tighten cap



Tighten by hand. Then use the provided tool (if your vessel requires it) and tighten an additional 1/8 of a turn. Do NOT overtighten!

**Video showing assembly process**

<https://goo.gl/9YLfZU>

Photo Credit: Photos from MFD