

APPENDIX C - MAPS

Location of Current and Former Facilities in the Central Portion of RFS



| | | |
|--|--|---|
| <ul style="list-style-type: none"> Existing Building Removed or Relocated Building (RFS) Property Boundary Former California Cap Company Facilities/Buildings Former Pacific Cartridge Company Buildings Former U.S. Briquette Company Building Former California Cap Company Tramway Former SERL Pond Marsh Boundary Surface Water Asphalt/Concrete Pads | <ul style="list-style-type: none"> Roads and Other Landscape Features Biologically Active Permeable Barrier Wall Former Seawall (Approximate) Slurry Wall Former California Cap Company Utilities: <ul style="list-style-type: none"> Natural Gas Line Fuel Line Hydraulic Line Sanitary Sewer Lines: <ul style="list-style-type: none"> Existing Sewer Line Removed Sewer Line Abandoned Sewer Line | <ul style="list-style-type: none"> Existing Soil/Sediment Discrete Sampling Location Removed Soil/Sediment Discrete Sampling Location |
|--|--|---|

Notes:
1. Some locations are approximate.
2. Former California Cap Company facility information is based on Sanborn maps from 1930 and 1941 and an earlier undated map signed by "J. Geo. Smith, C.E., Emeryville."

Company and Buildings:
RFS Richmond Field Station
SERL Sanitary Engineering Research Laboratory

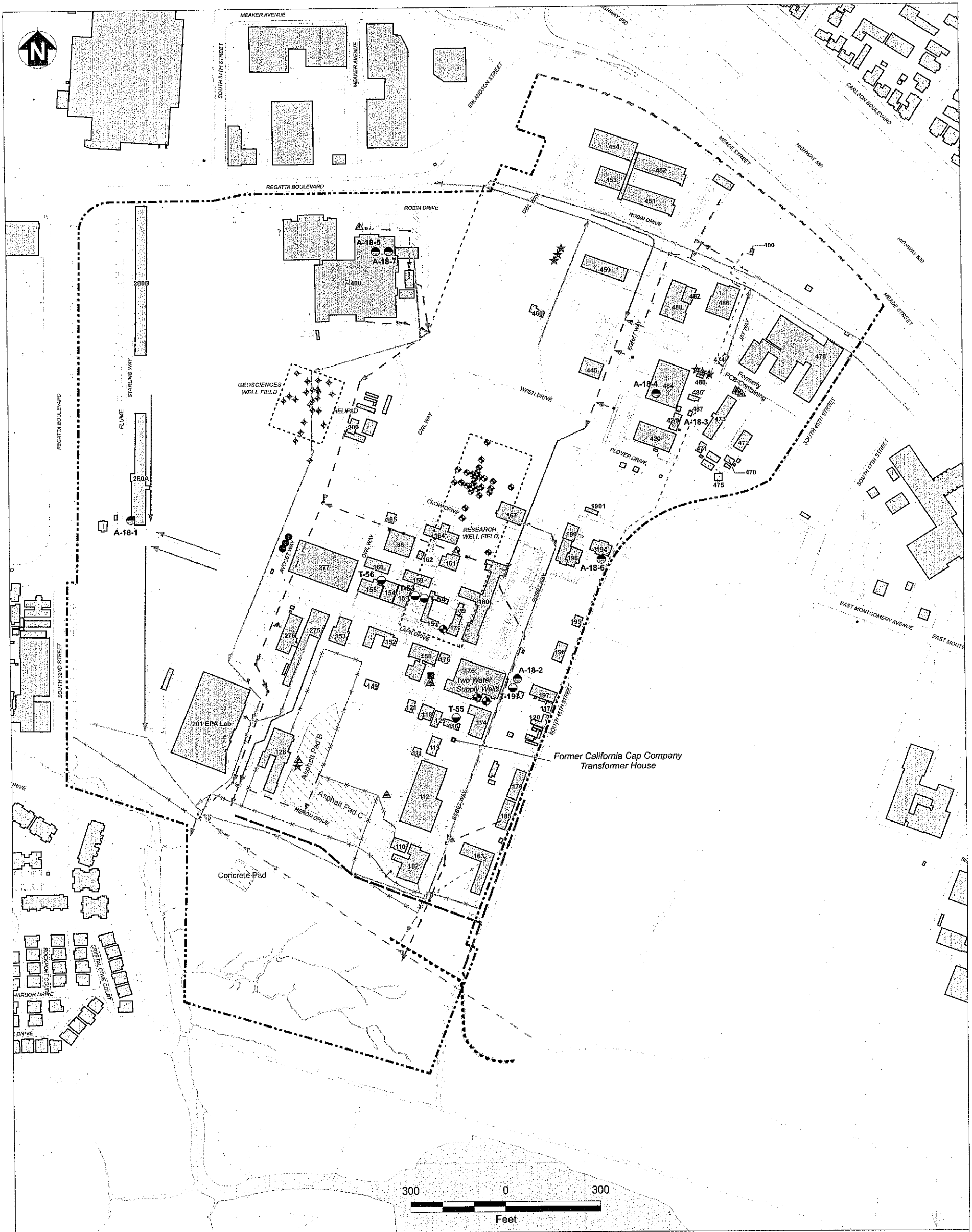


Richmond Field Station
University of California, Berkeley

FIGURE 7
LOCATION OF CURRENT AND
FORMER FACILITIES IN THE
CENTRAL PORTION OF RFS
Current Conditions Report

APPENDIX C - MAPS

Physical Features Map



- Existing Building (Building Numbers Shown in Blue)
- Surface Water
- Asphalt/Concrete Pads
- Well Field Boundary
- Property Boundary
- Approximate Property Boundary
- Fenceline
- Biologically Active Permeable Barrier Wall
- Former Seawall (Approximate)
- Slurry Wall
- Sanitary Sewer Lines:
 - Existing Sewer Line
 - Removed Sewer Line
 - Abandoned Sewer Line

- Geoscience Well
- Open Well (Not in Use)
- Closed Well (Pressure Grouted)
- Transformer Locations:
 - Pad-Supported, Non PCB-Containing
 - Pad-Supported, Former PCB-Containing (Removed)
 - Pole-Mounted, Non PCB-Containing
 - Pole-Mounted, Former PCB-Containing (Removed)
 - Former California Cap Company Transformer House
- Storm Drain Lines:
 - Open Swale
 - Underground Culvert
 - Underground Culvert, Abandoned (Grouted at Manholes)

- Former Underground Storage Tank (UST)
- Aboveground Storage Tank (AST)

Notes:
Some locations are approximate.
PCB Polychlorinated biphenyls



Richmond Field Station
University of California, Berkeley

**FIGURE 3
PHYSICAL FEATURES MAP**

Current Conditions Report

APPENDIX C - MAPS

Historic Potential Source Areas from Former Industrial Operations (Pre 2002)

