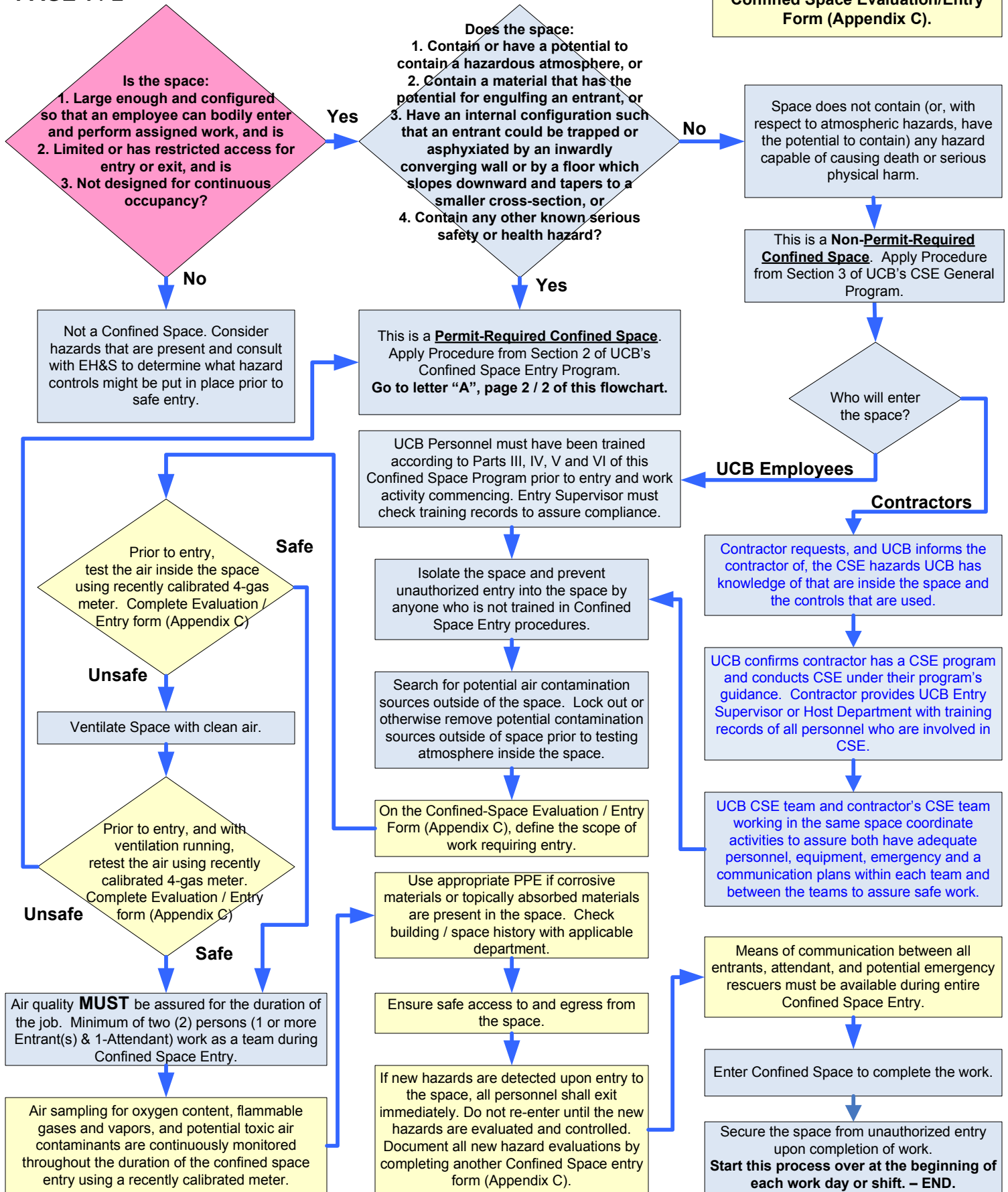


Confined Space Entry (CSE) Program and Program Flow Chart for Non-Permit CSE.

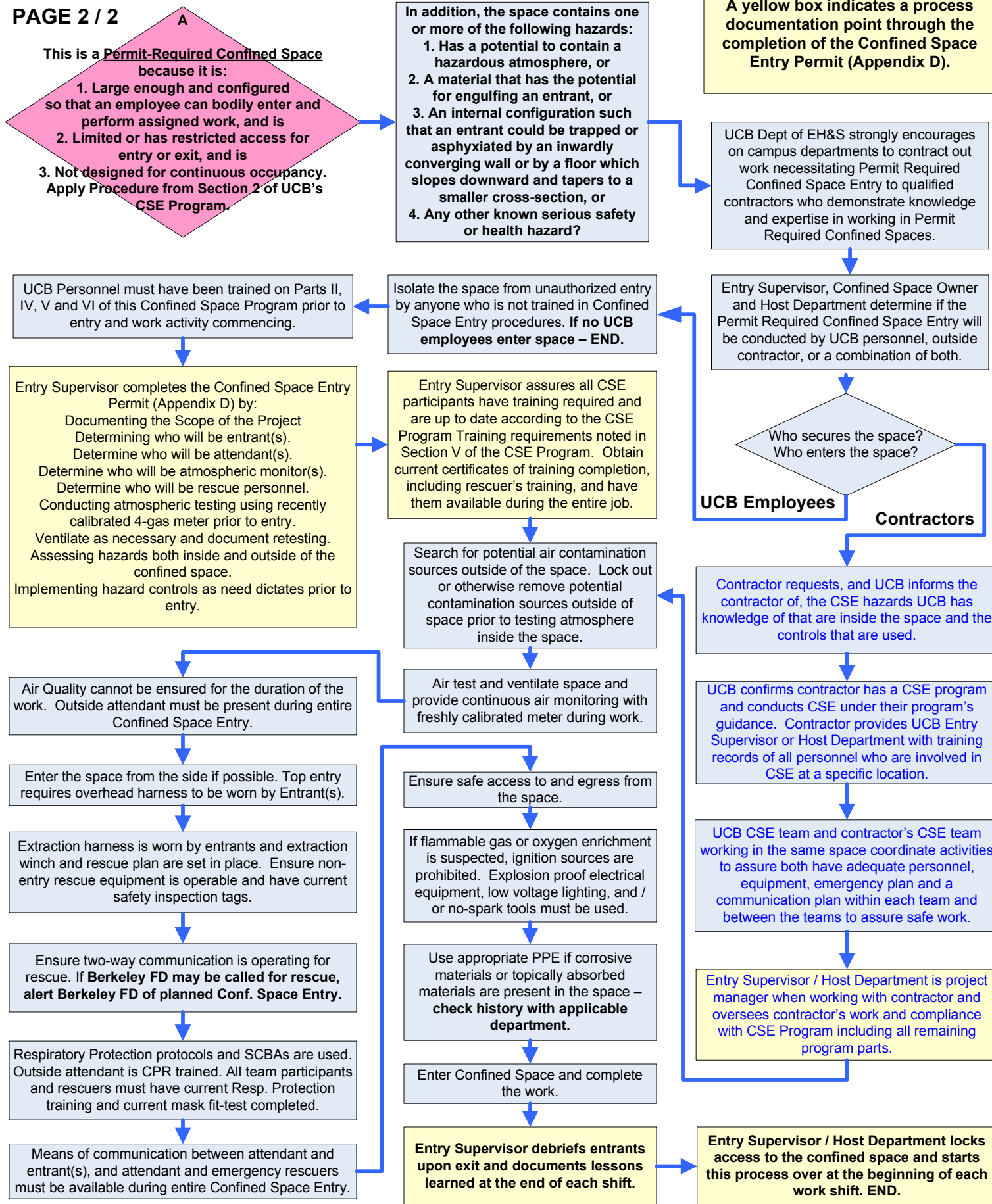
PAGE 1 / 2

A yellow box indicates a process documentation point completed by the Entry Supervisor on the Confined Space Evaluation/Entry Form (Appendix C).



Permit-Required Confined Space Entry Program Flow Chart

PAGE 2 / 2



A yellow box indicates a process documentation point through the completion of the Confined Space Entry Permit (Appendix D).

UCB Employees **Contractors**

Entry Supervisor / Host Department locks access to the confined space and starts this process over at the beginning of each work shift. END.